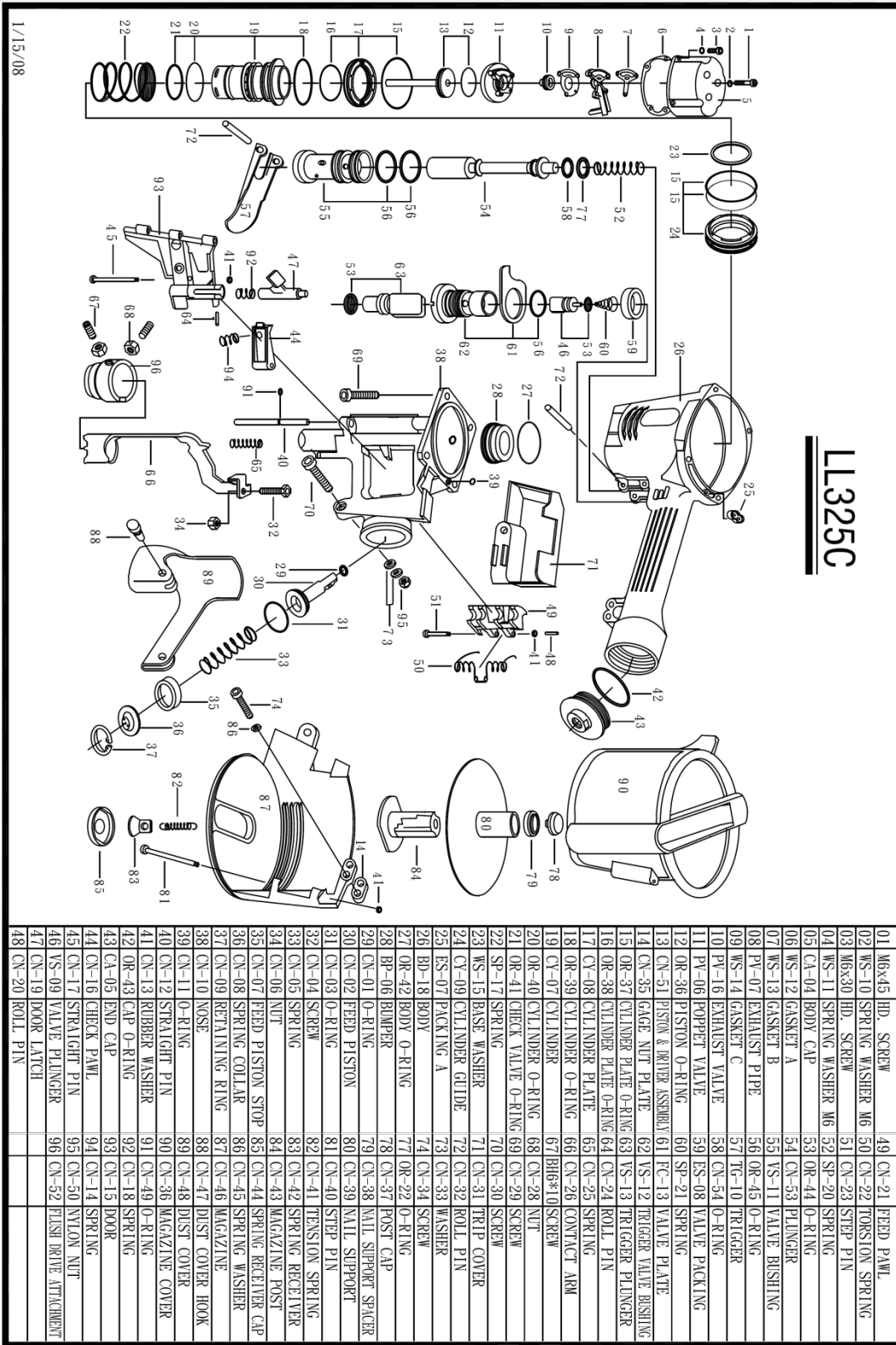


PARTS LEGEND

LL325C



LL325C

01	M6x45 HD. SCREW	49	CN-21	FEED PAWL
02	WS-10 SPRING WASHER M6	50	CN-22	TORSTON SPRING
03	M6x30 HD. SCREW	51	CN-23	STEP PIN
04	WS-11 SPRING WASHER M6	52	SP-20	SPRING
05	CA-04 BODY CAP	53	OR-44	O-RING
06	WS-12 GASKET A	54	CN-53	PLUNGER
07	WS-13 GASKET B	55	VS-11	VALVE BISHING
08	PV-07 EXHAUST PIPE	56	OR-45	O-RING
09	WS-14 GASKET C	57	TG-10	TRIGGER
10	PV-06 POPPET VALVE	58	CN-54	O-RING
11	PV-06 POPPET VALVE	59	ES-08	VALVE PACKING
12	OR-36 PISTON O-RING	60	SP-21	SPRING
13	CN-51 PISTON & DRIVER ASSEMBLY	61	FC-13	VALVE PLATE
14	CN-35 GAGE NUT PLATE	62	VS-12	TRIGGER VALVE BISHING
15	OR-37 CYLINDER PLATE O-RING	63	VS-13	TRIGGER PLUNGER
16	OR-38 CYLINDER PLATE O-RING	64	CN-24	ROLL PIN
17	CY-08 CYLINDER PLATE	65	CN-25	SPRING
18	OR-39 CYLINDER O-RING	66	CN-26	CONTACT ARM
19	CY-07 CYLINDER	67	BH6*10	SCREW
20	OR-40 CYLINDER O-RING	68	CN-28	NUT
21	OR-41 CHECK VALVE O-RING	69	CN-29	SCREW
22	SP-17 SPRING	70	CN-30	SCREW
23	WS-15 BASE WASHER	71	CN-31	TRIP COVER
24	CY-09 CYLINDER GUIDE	72	CN-32	ROLL PIN
25	ES-07 PACKING A	73	CN-33	WASHER
26	BD-18 BODY	74	CN-34	SCREW
27	OR-42 BODY O-RING	77	OR-22	O-RING
28	BP-06 BUMPER	78	CN-37	POST CAP
29	CN-01 O-RING	79	CN-38	MAL. SUPPORT SPACER
30	CN-02 FEED PISTON	80	CN-39	MAL. SUPPORT
31	CN-03 O-RING	81	CN-40	STEP PIN
32	CN-04 SCREW	82	CN-41	TENSION SPRING
33	CN-05 SPRING	83	CN-42	SPRING RECEIVER
34	CN-06 NUT	84	CN-43	MAGAZINE POST
35	CN-07 FEED PISTON STOP	85	CN-44	SPRING RECEIVER CAP
36	CN-08 SPRING COLLAR	86	CN-45	SPRING WASHER
37	CN-09 RETAINING RING	87	CN-46	MAGAZINE
38	CN-10 NOSE	88	CN-47	DUST COVER HOOK
39	CN-11 O-RING	89	CN-48	DUST COVER
40	CN-12 STRAIGHT PIN	90	CN-36	MAGAZINE COVER
41	CN-13 RUBBER WASHER	91	CN-49	O-RING
42	OR-43 CAP O-RING	92	CN-18	SPRING
43	CA-05 END CAP	93	CN-15	DOOR
44	CN-16 CHECK PAWL	94	CN-14	SPRING
45	VS-09 VALVE PLUNGER	95	CN-50	NYLON NUT
46	VS-09 VALVE PLUNGER	96	CN-52	FLUSH DRIVE ATTACHMENT
47	CN-19 DOOR LATCH			
48	CN-20 ROLL PIN			

⚠ WARNING ⚠

All parts must be periodically inspected and replaced if worn or broken. Failure to do this can affect the tool's operation and present a safety hazard.