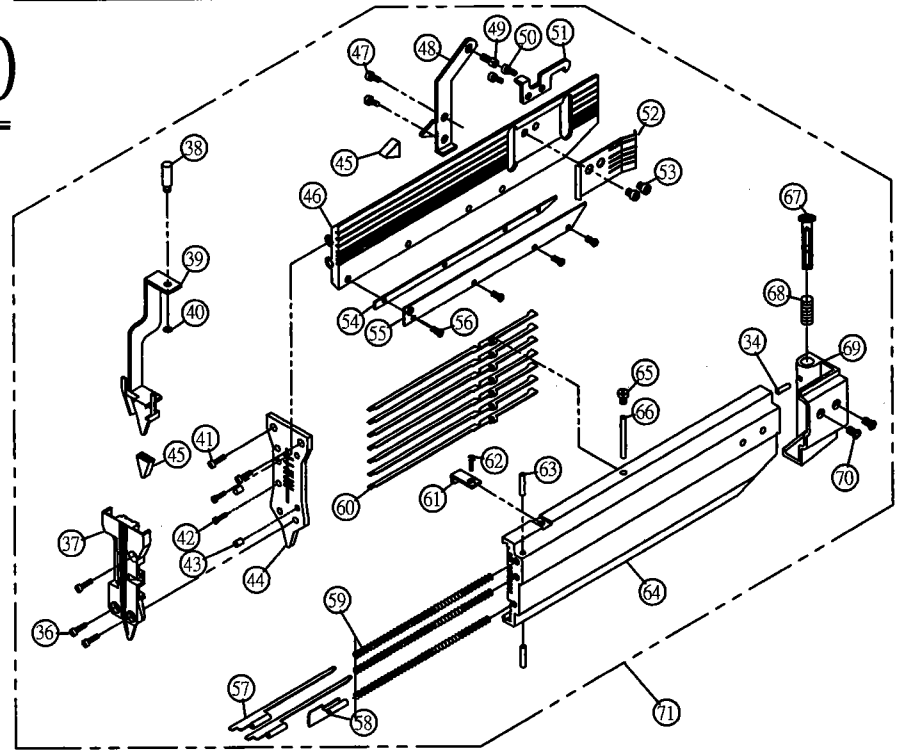
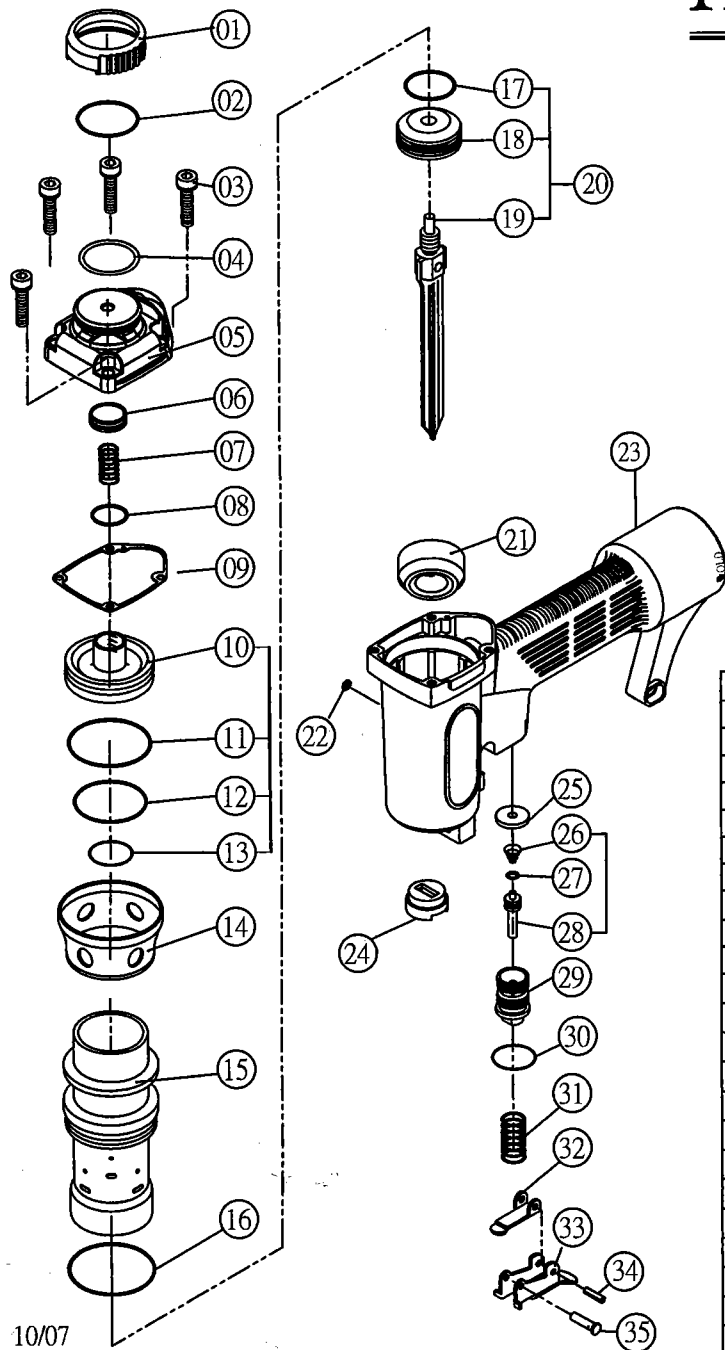


HP-100



01	ES-18	EXHAUST TURNER	25	ES-27	VALVE SEAL	49	M5*12	HD.SCREW
02	OR-61	O-RING	26	SP-21	SPRING	50	M4*10	HD.SCREW
03	M5*20	HD. SCREW	27	OR-77	O-RING	51	FC-120	LATCH
04	OR-117	O-RING	28	VS-34	PLUNGER	52	FC-99	TENSION PLATE
05	CA-37	BODY CAP	29	VS-35	TRIGGER VALVE HOUSING	53	FH4*6	SCREW
06	ES-26	EXHAUST	30	OR-11	O-RING	54	G-24	WEAR RAIL
07	SP-44	SPRING	31	SP-13	TRIGGER SPRING	55	MC-26	WEAR INSERT
08	OR-78	O-RING	32	TG-02	SECONDARY TRIGGER	56	FH3*6	SCREW
09	WS-59	GAKET	33	TG-01	TRIGGER	57	FD-72	PUSHER
10	PV-203	POPPET VALVE	34	SM-03	SPRING PIN	58	FD-64	PUSHER
11	OR-47	O-RING	35	SM-04	TRIGGER PIN	59	SP-70	SPRING
12	OR-203	O-RING	36	M4*8	HD.SCREW	60	FC-121	WEAR RAIL
13	OR-114	O-RING	37	FP-81	FRONT PLATE	61	FC-102	COVER STOP
14	SW-203	SPEACER	38	SM-96	PIN	62	BH4*6	SCREW
15	CY-33	CYLINDER	39	ST-100	CONTACT ARM	63	SM-201	PIN
16	OR-204	O-RING	40	E-3	E.WASHER	64	MC-26	MAGAZINE COVER
17	OR-205	PISTON O-RING	41	M5*14	HD.SCREW	65	BH4*4	SCREW
18	PS-201	PISTON	42	M4*14	HD.SCREW	66	SM-88	PIN
19	PS-114	DRIVE BLADE	43	SM-97	PIN	67	SM-98	LATCH PIN
20	PS-115	PISTON & DRIVER ASSEMBLY	44	P-76	WEAR PLATE	68	SP-64	SPRING
21	BP-201	BUMPER	45	ES-64	NO-MAR TIP	69	ES-48	REAR LATCH
22	E-2.5	E.WASHER	46	MZ-129	MAGAZINE	70	BH4*12	SCREW
23	BD-63	BODY	47	M4*8	HD.SCREW	71	MZ-130	MAGAZINE ASSEMBLY
24	SW-206	RETURN SEAL	48	HR-63	BRACKET			